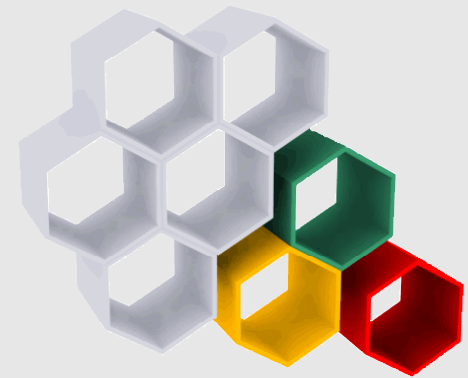


***"Focused through functional navigation"***



# DIYS-portal



The large amount of information available forces each organization to channel and optimize the flow of information, both internally and externally.

The Do-It-YourSelf-portal from Metaware is the tool to open up business information in a transparent manner and in your own corporate style: information that exists by itself or arises from underlying data bases. This is all possible without specific IT knowledge.

**The DIYS-portal increases productivity in teamwork.**



## Portals: complete the puzzle

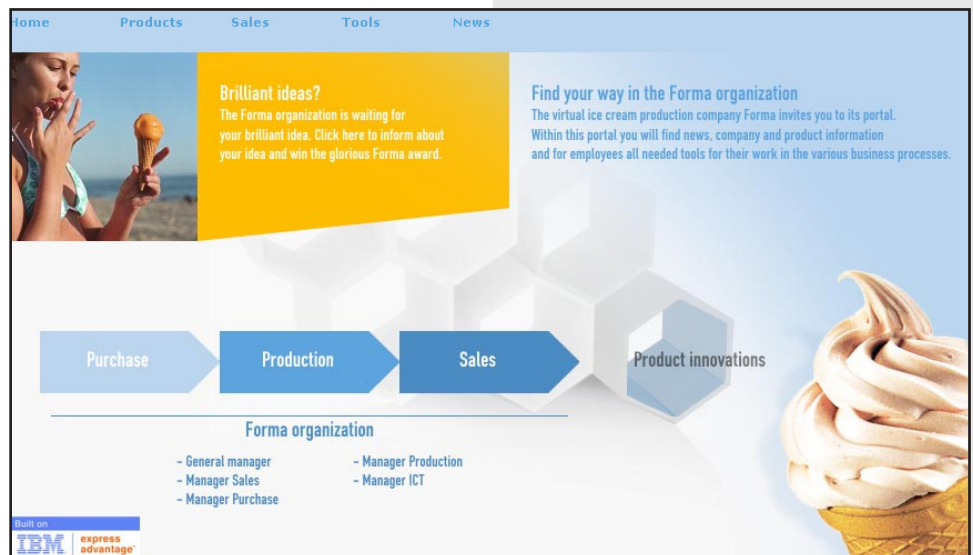
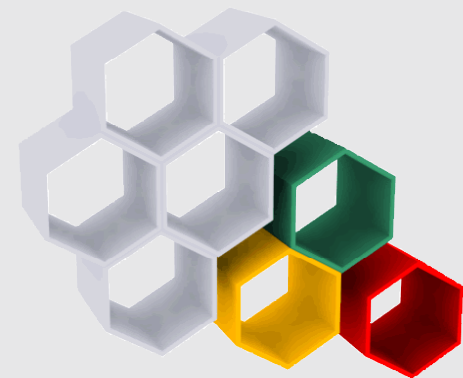
The multiplicity of critical company data, a great diversity of involved colleagues, offices at many locations, and clients that want a quick answer.

The pieces of the puzzle can be brought together... with a portal as the tool.

A portal contains a dynamic work environment that provides access to critical company data for each employee, directly or indirectly through coupling with the system under consideration. One's own productivity increases and the cooperation between colleagues becomes more effective, specifically directed at one's own business processes.

A portal offers an immediate overview: new facts next to general business information. From this overview it is possible to immediately navigate to more detailed information, necessary for your own business activity and effectiveness.

In short: *Bring the data and the system together and increase productivity between colleagues*



The screenshot shows a web portal with a navigation bar (Home, Products, Sales, Tools, News) and a main content area. On the left, there is a photo of a woman eating an ice cream cone. The main content area features a yellow box with the text "Brilliant ideas? The Forma organization is waiting for your brilliant idea. Click here to inform about your idea and win the glorious Forma award." To the right, there is a blue box with the text "Find your way in the Forma organization The virtual ice cream production company Forma invites you to its portal. Within this portal you will find news, company and product information and for employees all needed tools for their work in the various business processes." Below this, there is a process flow diagram with four steps: Purchase, Production, Sales, and Product innovations. Underneath the diagram, the "Forma organization" is listed with roles: General manager, Manager Sales, Manager Purchase, Manager Production, and Manager ICT. At the bottom left, there is a logo for "Built on IBM express advantage". On the right side of the screenshot, there is a large image of a soft-serve ice cream cone.

## Characteristics of a good portal

- Well-organized and provides insight
- Scalable and easy to maintain
- Has its own character by uniform design or your own company style
- Personal selection of all available information
- Increased productivity within the cooperation of colleagues
- Oriented towards unlocking company knowledge
- Consolidation of data and systems from the viewpoint of the company processes
- Your own intranet and company support system become united
- Platform independence through web technology

## Publication: simple and effective

Within an organization each department has their 'own' news and information which the department would like to publish. Or from the central organization a uniform publication is desired, for their organization or for clients.

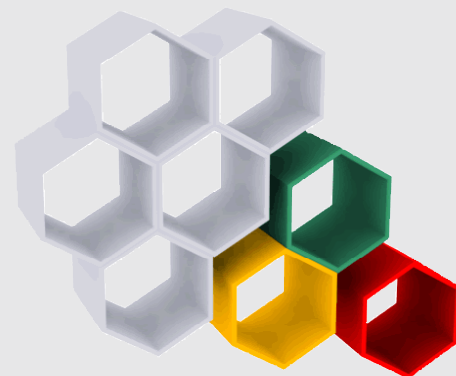
With the DIYS-portal, publication is simple to organize and easily available within their own intranet. From the portal the necessary systems are available directly and the company processes can be enhanced.

## Integration and unlocking

The portal is more than a 'digital document'. It unlocks within a specific context (for example, the purchasing process) relevant business information. Through the portal, it is possible to directly access the underlying systems for detailed information. The web technology makes it possible for different business systems to be unlocked, independent from the used platform.

All of this increases productivity, regardless of place and time.

Without knowledge of HTML or JAVA, every core user can organize and maintain the portal. A department or project team can keep their own portal readily available without depending on the IT department. This works quickly and efficiently.



The screenshot displays the 'METAWARE PORTAL DEMO' interface. The top navigation bar includes 'Home', 'Products', 'Sales', 'Tools', and 'News'. A search bar is located on the right. The main content area is titled 'Product information' and contains a text block with contact information for Mr. Info. Below this, there is a tree view of product categories: 'Cream IceCream', 'Wafel IceCream' (with sub-items like 'Dreamy Wafel Vanilla'), and 'Yoghurt IceCream'. An embedded window titled 'RSS Portal Product information - Windows Internet Explorer' is open, showing an RSS feed with the following content:

**RSS**

<http://portal.metaware.nl/portal/infoware/infowarepi.nsf/myRSS.htm?OpenPage>

**Wat is RSS?**  
RSS is een standaard van tekst opmaken. Voordeel hiervan is dat een computerprogramma de content, of kopij, kan interpreteren. Zo is er bijvoorbeeld een duidelijke scheiding tussen de kop van een artikel, een link en de tekst zelf.

**Wat is RSS-feed?**  
We spreken van een RSS-feed als een tekstbestand met deze opmaak op bepaalde tijden wordt ververst.

**Wat kun je met RSS?**  
RSS leent zich zeer goed voor het uitwisselen van content. Een computer kan het tekstbestand opvragen, interpreteren en op een bepaalde manier

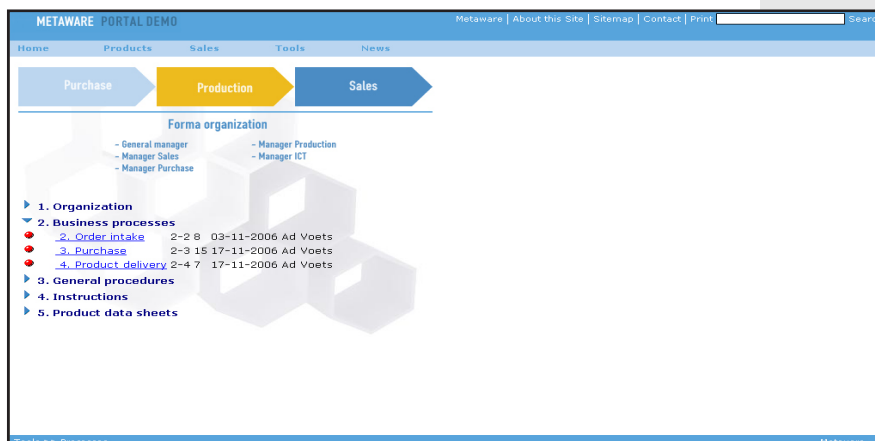
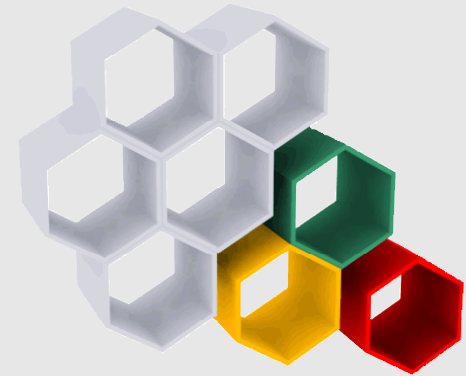
## The power of the DIYS-portal

The DIYS-portal brings business information quickly and efficiently together: from an overview, detailed information can be quickly gathered and used, without losing the connection.

Through its 'fit for purpose' organization, no specific programming knowledge is required. It is not necessary to request assistance from the IT department. The DIYS-portal contains templates that are easy to use, so that the designs run smoothly and practically. At the same time it is possible in a simple manner to maintain your own corporate style.

Each core user can organize the portal for their own department or project, and the same user can also execute the maintenance. In this manner, relevant information, both content and adaptations, are directly available for the remainder of the organization or clients.

Cooperation becomes real-time regardless of place and time.



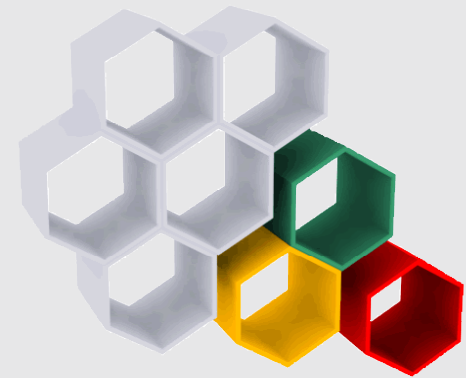
## Organization

The contents are offered in a frame structure: stored overviews or adaptations in the portal to the underlying systems. The large content window gives an overview and it is simple to click to detailed information through the menus or side windows.

Through the use of templates, each defined layout can be re-used. And not unimportant: what you see is what you get.

## Key features DIYS-portal

- Structured and flexible organization
- Extensive content and navigational functions
- Brings information together, from, web pages, MS Office documents, Lotus databases and more
- Easily maintained with a practical organization
- Head-, foot-, and menu-structure placed by the individual
- No programming knowledge necessary
- Color establishment at the selection of the business
- Your own logo easily integrated
- Practical applicable templates for uniform layout



### **The DIYS-portal: the top layer of the 'ware'-concept**

The success of an organization is to an important degree determined by the availability and topicality of all company information and the experience of the employees. All of this supports organizations on their path to success and competitive abilities. The DIYS-portal integrates the different solutions within the 'ware-concept', such as Isoware (document management), Biware (call management) or Infoware (knowledge management). The various solutions fit like modules in an integrated management system.

### **More than software: the organization is the key**

Our years of experience in realising solutions for quality management systems, supports our idea that the organization itself is the key to successful implementation of our products, both our standard applications and our custom-made applications. For maximum results in the interaction between software and organization, Metaware has developed a convenient pilot method. Over a short period of time, an organization can get acquainted with the available solution. Its use is then limited to a select group of users, who can implement the company's methods within the application. After the application has proven its worth, the application can then be implemented further in the organization. Metaware has for this purpose an implementation plan that has largely proved itself

## Lotus Notes / Domino

The Do-It-YourSelf-portal exploits the power of Lotus Notes / Domino, the world's standard for all your intranet solutions.

### System requirements

#### Server

Operating system (among others): Microsoft Windows 2000 / 2003, Linux

Software: Lotus Domino 6.5+

Mailsystem: Lotus Notes 6.5+ / Outlook 2000+

Hardware: recommended 512 Mb+ internal memory, 3 Gb+ disk space (depending on o.s.)

#### Client

Operating system (among others): Microsoft Windows 2000, XP, Vista

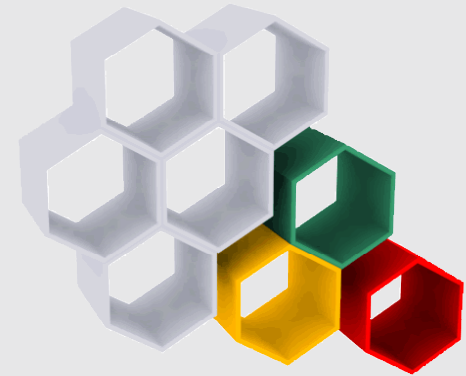
Software: Lotus Notes 6.5+, Microsoft Internet Explorer 6.0+, MS Office 2000+

Hardware: recommended 512 Mb+ internal memory, 512 Mb+ disk space (depending on o.s.), display resolution 1024 x 768

### How to proceed?

For further information you can go to the Internet site [www.metaware.nl](http://www.metaware.nl). Here you can download demonstration software or start with an on-line demo.

For further information or a live demonstration, please contact us at ph. +31 (0)50 537 00 80.



Metaware B.V.  
Rijksstraatweg 239  
9752 CB Haren (Gn)

T: +31(0) 50 537 00 80  
F: +31(0) 50 537 00 81  
E: [info@metaware.nl](mailto:info@metaware.nl)

[www.metaware.nl](http://www.metaware.nl)

**DIYS-portal**